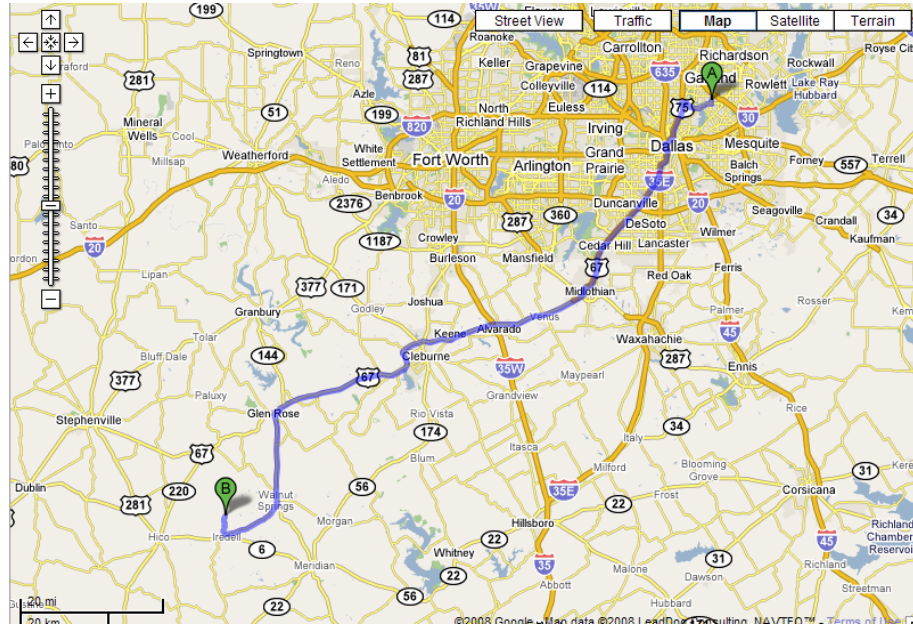


Directions

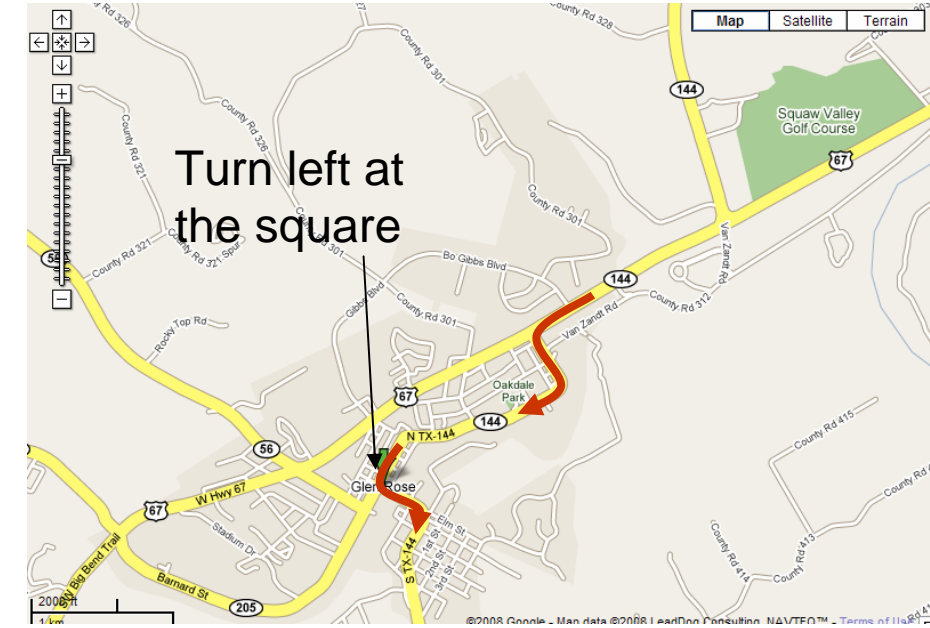
January Campout

- **Alspaw Ranch**
- Take 75 south to Interstate 35. Veer to the right on Highway 67 South. Stay on Highway 67 to Glen Rose.
- Turn south on Highway 144 in Glen Rose. (Need to watch for highway sign, there is NO stop light or stop sign.)
- Stay on 144 through downtown. There will be several curves. Proceed on Highway 144 to Walnut Springs (approximately 10 miles).
- Turn right on Highway 927 as you are leaving Walnut Springs. There is a Valero Gas Station on the left.
- Proceed approximately 10 miles to Iredell. Turn right on FM 216. There is a stop sign.
- Stay on FM 216 for about 2.2 miles to 812 FM 216 on the right. Watch for red brick house. Property is high fenced with yellow fence posts.
- Go half mile past house to starting point of hike in.

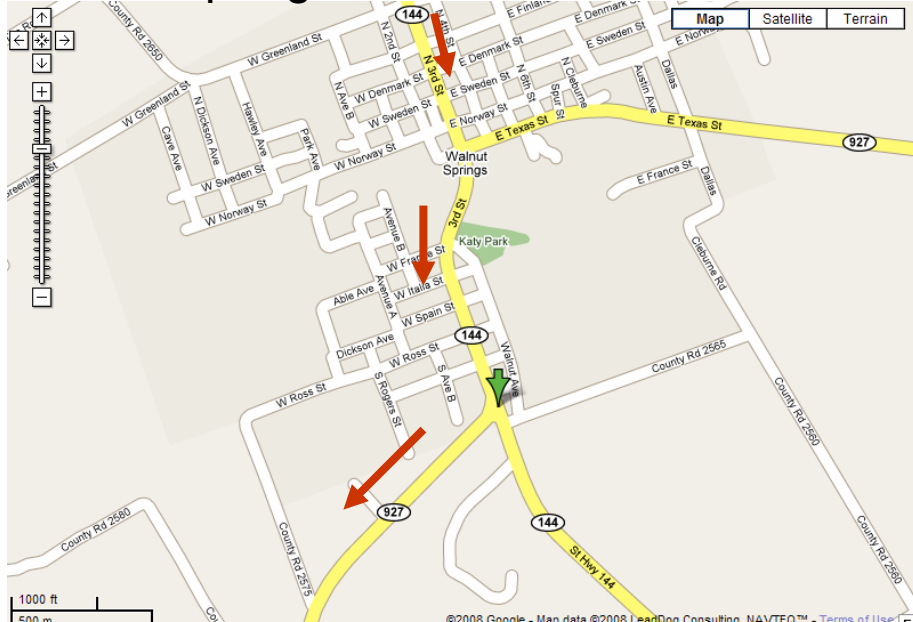
Overview



Glen Rose



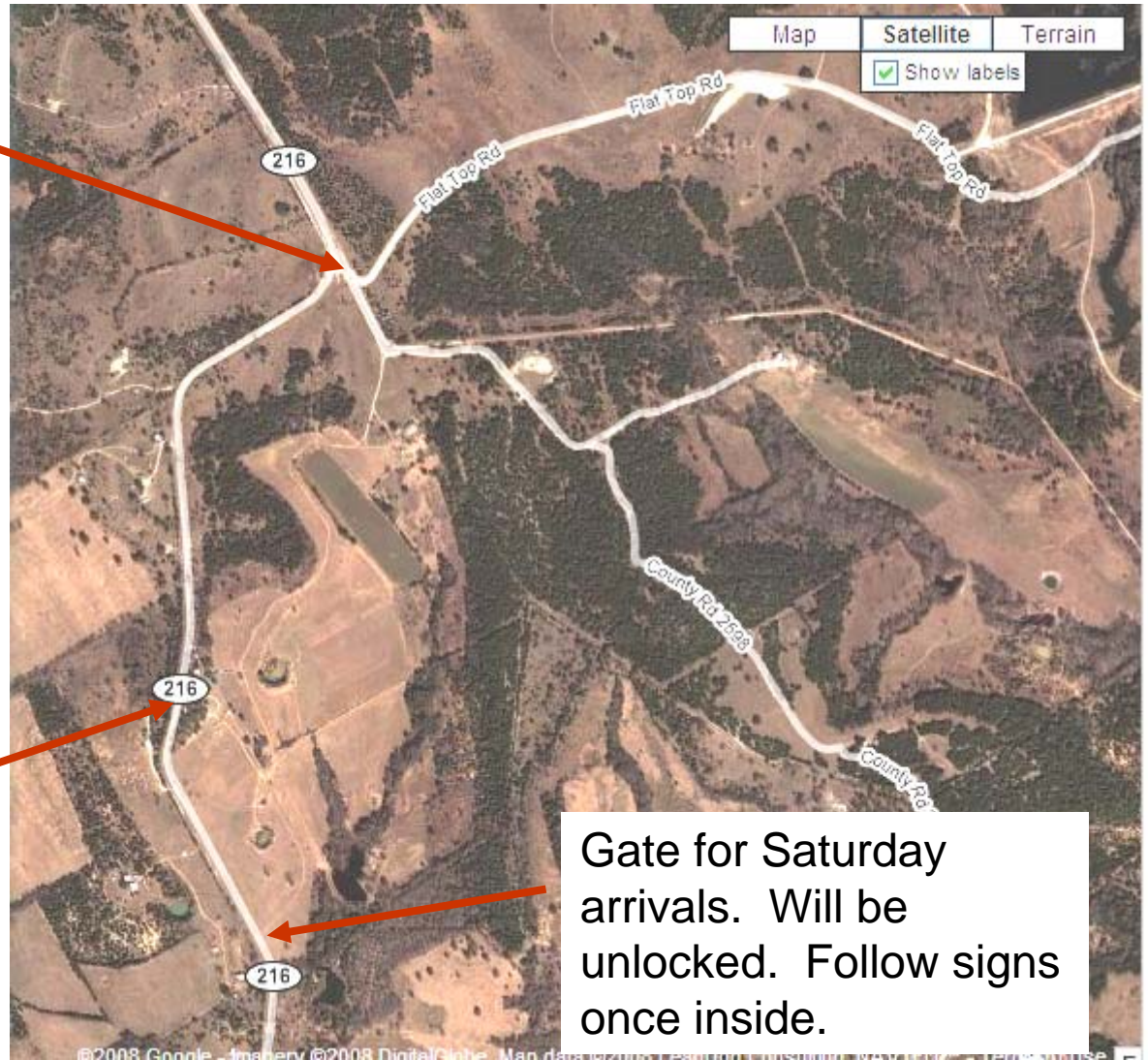
Walnut Springs



Irredell



Drop off Scouts
for hike in



Alspaw
house
(on right)

Gate for Saturday
arrivals. Will be
unlocked. Follow signs
once inside.

From Iredell